



**Pitfield Street, London, N1**

**BUTLER & STAG**



**Welcome to your new home in the heart of Hoxton! This delightful two-bedroom apartment offers the perfect blend of modern comfort and a bright, airy atmosphere. Nestled in one of London's most vibrant neighbourhoods, this apartment provides the ideal setting for urban living.**



## Leasehold

- Second Floor Apartment
- Modern Interiors
- Stunning Views of The Landscaped grounds
- Chain Free
- Two Double Bedrooms
- Secure Entry Phone System
- Old Street (Northern Line) Station Close By
- 683 Sq/Ft Internal Living Space

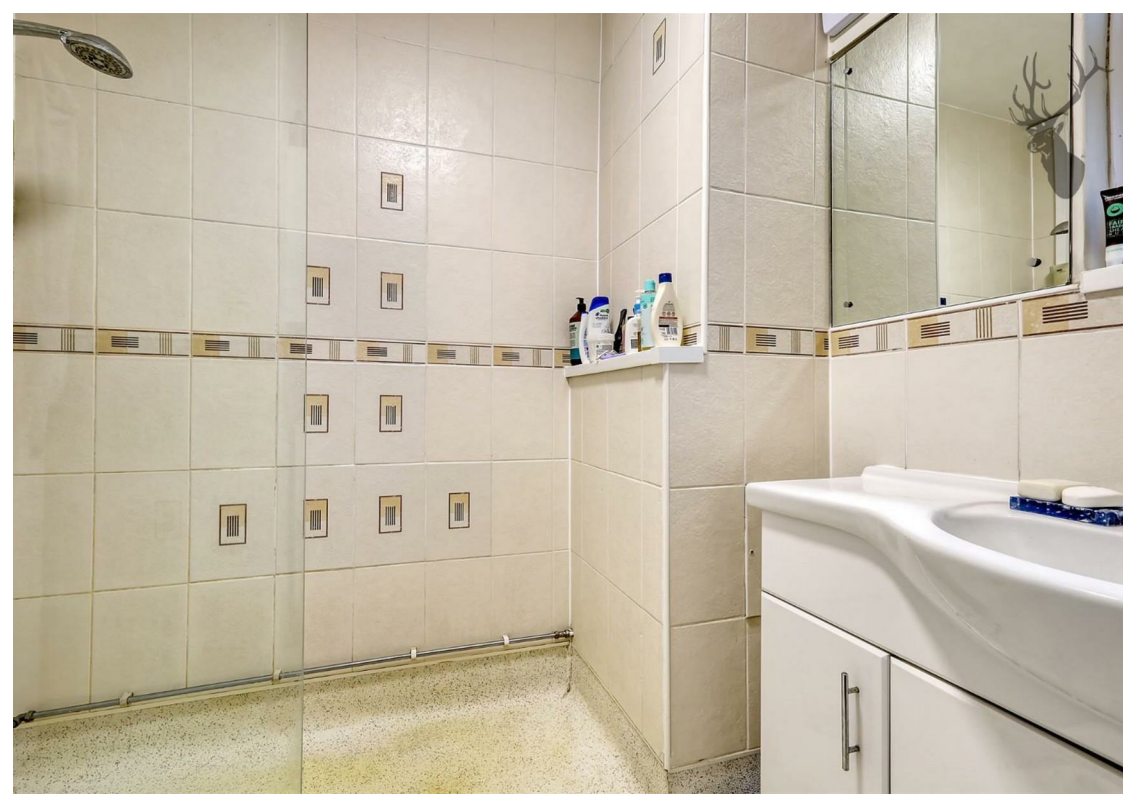
As you step inside, you'll be greeted by a spacious, living area flooded with natural light. Large windows and a neutral color palette create a welcoming and tranquil ambiance. It's the perfect spot for entertaining friends or relaxing with your family. The well-appointed kitchen is a chef's dream, featuring sleek countertops and ample cabinet space. Whether you're preparing a quick breakfast or hosting a dinner party, this kitchen has you covered. The apartment boasts two cozy bedrooms, each designed for comfort and relaxation. The generous windows in each room allow plenty of light to filter in, creating a serene and inviting atmosphere. With ample closet space, you'll have room for all your belongings. The modern bathroom is elegantly designed and includes a full-sized bathtub and shower combination.

Hoxton is known for its artistic vibe, trendy cafes, and eclectic shops. You'll be steps away from a wide array of restaurants, art galleries, and nightlife options. Hoxton Station is within walking distance, providing easy access to the rest of London.

The apartment is located in a secure building for your peace of mind.

The nearest station is Old Street, while the City is within easy walking distance. Surrounded by East London's most famous social hotspots including Hoxton Square, Brick Lane, Shoreditch, Spitalfields and Columbia Road. Fantastic transport links from Hoxton overland station and Old Street tube provide easy access to the City and the West End.



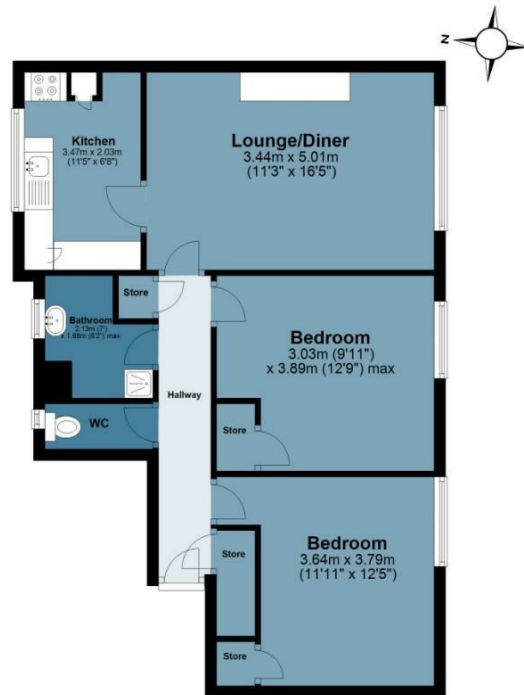


## Royal Oak Court

Approx. Gross Internal Area 63.5 Sq M ( 683 Sq Ft )

**BUTLER & STAG**

**Second Floor**  
Approx. 63.5 sq. metres (683.0 sq. feet)



Measurements are approximate and for illustration purposes only. While we do not doubt the accuracy and completeness, we advise you conduct a careful independent assessment of the property to determine monetary value.  
© @modephotouk www.modephoto.co.uk

**BUTLER & STAG**

☎ 020 8102 1236

🏠 508 Roman Road, Bow, London, E3 5LU

✉ bow@butlerandstag.com

[www.butlerandstag.uk](http://www.butlerandstag.uk)

IMPORTANT NOTICE - These particulars have been prepared in good faith and they are not intended to constitute part of an offer or contract. We have not performed a structural survey on this property and the services, appliances and specific fittings have not been tested. All photographs, measurements, floor plans and distances referred to are given as a guide and should not be relied upon.